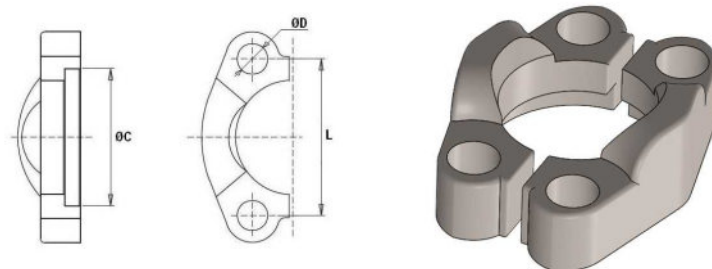


Conexiones Standard

Bridas para flexibles

Brida partida pasante

Acero Inoxidable AISI 316-L



| Artículo | Serie | Ø int | Tamaño | L | ØC | ØD |
|--------------------|----------|-------|--------|--------|--------|-------|
| ZBBP308302 | 3000 PSI | 30.2 | 1/2" | 38,1 | 30,96 | 8,75 |
| ZBBP312381 | 3000 PSI | 38.1 | 3/4" | 47,63 | 38,89 | 10,75 |
| ZBBP316445 | 3000 PSI | 44.5 | 1" | 52,37 | 45,24 | 10,75 |
| ZBBP320508 | 3000 PSI | 50.8 | 1"1/4 | 58,72 | 51,59 | 11 |
| ZBBP324603 | 3000 PSI | 60.3 | 1"1/2 | 69,85 | 61,09 | 13,5 |
| ZBBP332714 | 3000 PSI | 71.4 | 2" | 77,77 | 72,24 | 13,5 |
| ZBBP340841 | 3000 PSI | 84.1 | 2" 1/2 | 88,9 | 84,95 | 13.5 |
| ZBBP3481024 | 3000 PSI | 102.4 | 3" | 106,38 | 102,39 | 16,75 |
| ZBBP364127 | 3000 PSI | 127 | 4" | 130,18 | 127,8 | 17 |
| ZBBP608318 | 6000 PSI | 31.8 | 1/2" | 40,49 | 32,54 | 8,75 |
| ZBBP612413 | 6000 PSI | 41.3 | 3/4" | 50,8 | 42,06 | 11 |
| ZBBP616476 | 6000 PSI | 47.6 | 1" | 57,15 | 48,41 | 13 |
| ZBBP620540 | 6000 PSI | 54 | 1"1/4 | 66,68 | 54,76 | 15 |
| ZBBP624635 | 6000 PSI | 63.5 | 1"1/2 | 79,38 | 64,29 | 17 |
| ZBBP632794 | 6000 PSI | 79.4 | 2" | 96,82 | 80,16 | 21 |